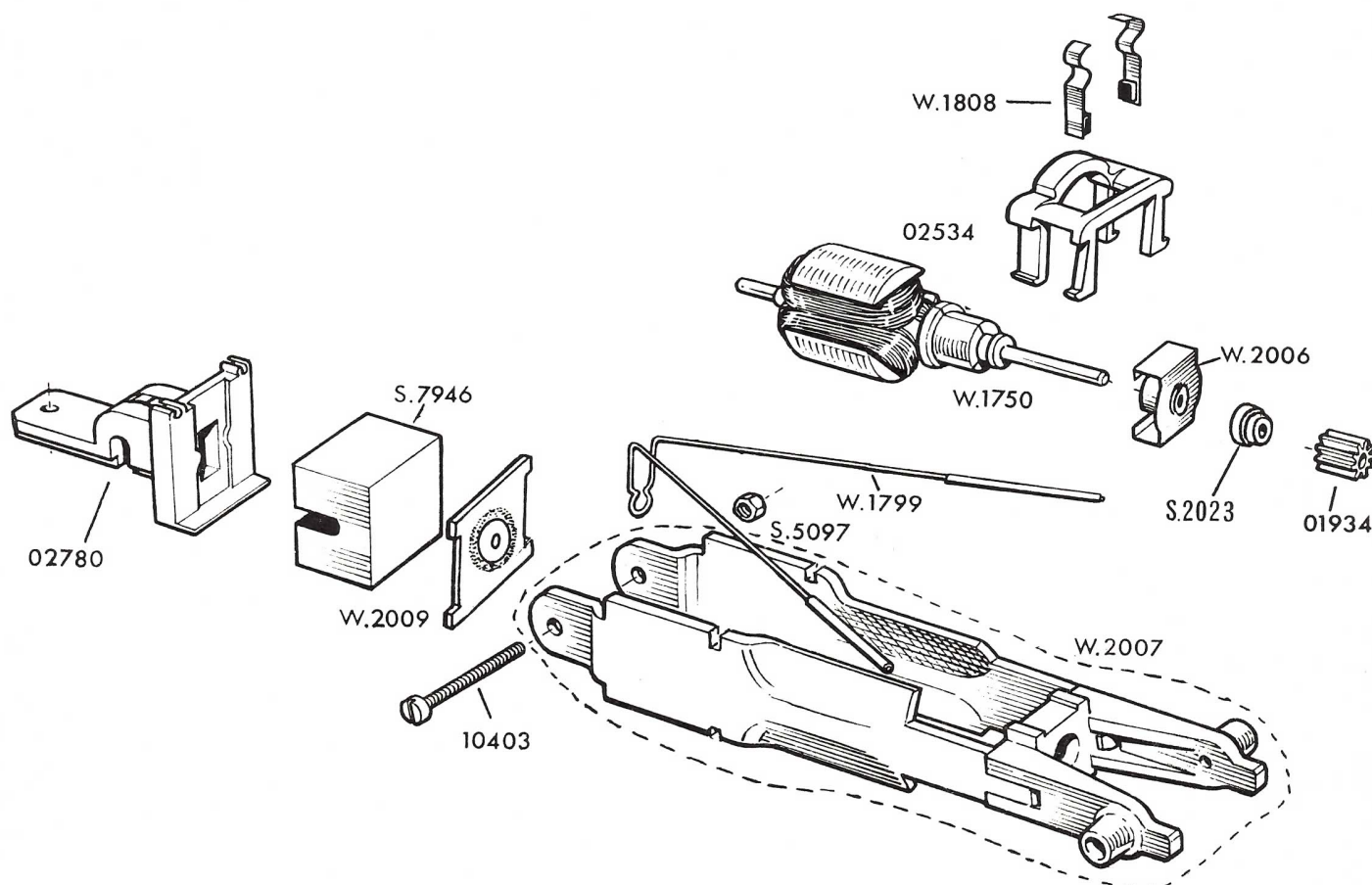


W.1602 POWER SLEDGE MOTOR



W.1750	Armature
W.1799	Brush Spring and Insulators
W.1808	Carbon Brush
W.2006	Bearing Plate Assembly
W.2007	Pole Pieces and Gearbox Assembly
W.2009	Back Plate and Bearing
S.2023	Thrust Bush
S.5097	8 BA Nut
S.7946	Magnet
01934	Pinion
02534	Bridge Piece
02780	Slide Base
10403	Screw

Modifications are made from time to time to Rovex Triang models. If a spare part is required which does not coincide with the illustration, a full description should be given and, if necessary a sketch or sample should accompany the order. The parts which comprise an "X" or "W" assembly are not available as separate items unless the individual parts are numbered.

Printed in England